

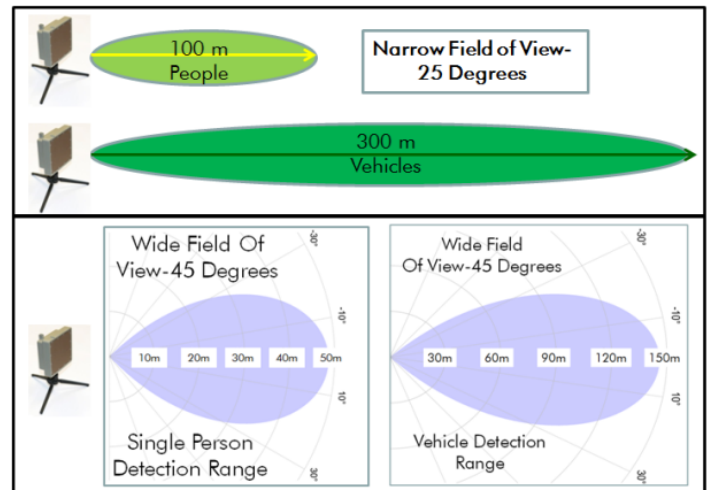
rScene® Unattended RF Sensor

Always Looking for Targets of Interest

rScene®DESIGN

rScene® is designed to detect and track moving people or vehicles. The rScene® sensor uses an antenna to determine the target range and the target azimuth location. The rScene® continues a track of a target while it moves within the radar coverage area. The rScene® provides the target speed and direction of travel to the user. The rScene® determines whether the target is a person or a vehicle and reports the classification information to the user. Multiple people and vehicles are displayed simultaneously. The user is linked to the rScene® via a wireless two way communication network. The rScene® uses McQ's Common Data Interchange Format (CDIF) to send the target information and rScene® health and status reports. All of this data is displayed on a user interface. Both a wide and a narrow field of view radar are available to match detection requirements.

rScene® target monitoring allows the sensors to be placed anywhere, be network connected to the user, and have target information displayed on a map based user interface for cell phone, tablets, laptops or large screen computers.



- *Unattended Sensor for Any Type of Area*
- *High Performance Target Detection*
- *Classifies People and Vehicles*
- *Rugged for Outdoor Environments*
- *Low Power for Long Life on a Small Battery*
- *Wireless Network Link to User Display*
- *Two Field of View Models-Wide and Narrow*

The two field of view models provide the flexibility to detect targets at long ranges along a road or pathway, or cover a larger area for protecting approaches to facilities.

rScene® Unattended RF Sensor

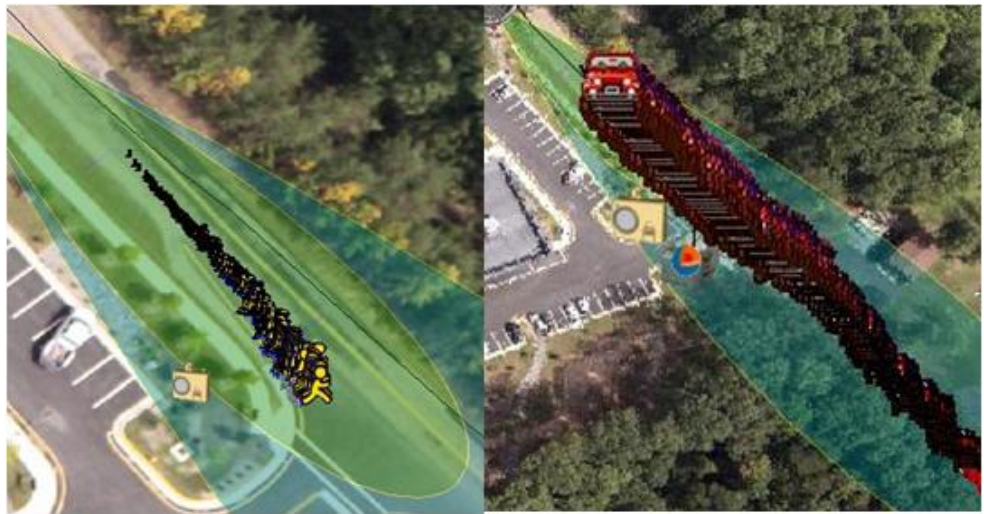
Features and Specifications

rScene®

PERFORMANCE

rScene® provides the user with a small battery powered sensor that can be deployed to detect targets in any monitoring scenario. The rScene® will detect targets day or night and is particularly effective in areas where other sensors are limited. These areas include busy urban areas where seismic sensors are limited, areas with foliage blocking camera vision, scenarios looking beyond fences, detecting boats on the water, surveillance in marsh areas, and detection around industrial facilities. A wide field of view and a narrow field of view provide flexible deployment options. The rScene® sensor locates the target accurately in range and bearing so a camera can be pointed at the target. The rScene® sensor provides target direction and speed that support multisensor integration and dynamic target display. The rScene® classifies people and vehicles and displays their tracks with separate icons. The rScene® has very low power consumption and can operate on a small battery for many days and with a solar panel indefinitely.

The rScene® RF Sensor automatically detects and reports target activities in any kind of scenario. Targets in busy urban areas, boats on the water, indoor applications, and difficult terrain areas can all be monitored with the rScene® Unattended RF Sensor.



The Sensor Report sent from the field via a wireless network to the user shows the target classification, location, direction of travel and speed. The vehicle icon or the people icon displays the target classification.

- Very Small 5 x 5 x 2 Inch RF Sensor Unit, 4 x 6 ¾ x 7 ½ Battery Case
- Weight: RF Sensor Unit 1 Lb, Battery Case with BA-5390 4.5 Lbs
- Automated Target Detection and Classification; Multiple Targets Can Be Displayed; Tamper Alarm if Unit is Moved.
- Detects and Classifies People Up to 100 Meters and Vehicles Up to 300 Meters.
- Can See Through Foliage and Camouflage.
- Very Low False Alarm Rate; Wind, Rain, and Foliage Movement Do Not Cause False Alarms.
- Long Operational Life Up to a Week on Battery, Solar Power Controller Built In Long Duration Operation.
- RF Wireless Network Communications
- Meta Data Includes GPS Location; Compass Pointing Angle; Target Location, Speed, and Direction.

Specifications may change due to product enhancements. For more information on any of our products or services, please visit us on the web at: www.mcqinc.com.

© June 2017 McQ Inc.

1551 Forbes Street
Fredericksburg, VA
22405-1603 USA



T: 540.373.2374
www.mcqinc.com